

# **LSBio™ Rat CCL3 / MIP-1-Alpha ELISA Kit**

**Catalog No. LS-F983**

## **User Manual**

**Please Read the Manual Carefully  
Before Starting your Experiment**



For research use only. Not approved for use in humans or for clinical diagnosis.

# CONTENTS

# PAGE

---

|                                       |    |
|---------------------------------------|----|
| Introduction.....                     | 3  |
| Assay Principles.....                 | 4  |
| Assay Format.....                     | 5  |
| Assay Restrictions.....               | 6  |
| Materials Included.....               | 6  |
| Additional Materials Required.....    | 7  |
| Health and Safety Precautions.....    | 7  |
| Storage Information.....              | 8  |
| Sample Preparation and Storage.....   | 9  |
| Sample Experiment Layout.....         | 10 |
| Immunoassay Protocol.....             | 11 |
| Summarized Protocol.....              | 16 |
| Sensitivity.....                      | 17 |
| Cross Reactivity and Specificity..... | 17 |

## INTRODUCTION

Rat MIP-1 $\alpha$  or Macrophage Inflammatory Protein 1 $\alpha$ , also known as C-C Motif Chemokine 3, is a 92 amino acid cytokine protein encoded by the *Ccl3* gene located at locus 10q26 on chromosome 10. After initial synthesis, the 23 residue signal sequence is cleaved from the N-terminal region, allowing for proper folding and maturation of the MIP-1 $\alpha$  peptide. MIP-1 $\alpha$ , a monokine with inflammatory and chemokinetic properties, has chemotactic activity for monocytes, neutrophils, eosinophils, basophils, and lymphocytes. Moreover, this heparin binding protein is required for lung TNF- $\alpha$  production, neutrophil recruitment and subsequent lung injury and may function as an autocrine mediator for the macrophage production of TNF- $\alpha$ , which in turn up-regulates vascular adhesion molecules required for a neutrophil influx. Belonging to the intercrine beta (chemokine C-C) family, MIP-1 $\alpha$  is induced by lipopolysaccharides (LPS).

*Source: Entrez Gene: Ccl3 chemokine (C-C motif) ligand 3 [Rattus norvegicus]; Swiss-Prot: P50229*

## ASSAY PRINCIPLES

The LSBio™ Rat MIP-1 $\alpha$  ELISA Kit contains the components necessary for quantitative determination of natural or recombinant Rat MIP-1 $\alpha$  concentrations within any experimental sample including cell lysates, serum and plasma. This particular immunoassay utilizes the quantitative technique of a “Sandwich” Enzyme-Linked Immunosorbent Assay (ELISA) where the target protein (antigen) is bound in a “sandwich” format by the primary capture antibodies coated to each well-bottom and the secondary detection antibodies added subsequently by the investigator. The capture antibodies coated to the bottom of each well are specific for a particular epitope on Rat MIP-1 $\alpha$  while the user-added detection antibodies bind to epitopes on the captured target protein. Amid each step of the procedure, a series of wash steps must be performed to ensure the elimination of non-specific binding between proteins to other proteins or to the solid phase. After incubation and “sandwiching” of the target antigen, a peroxidase enzyme is conjugated to the constant heavy chain of the secondary antibody (either covalently or via Avidin/Streptavidin-Biotin interactions), allowing for a colorimetric reaction to ensue upon substrate addition. When the substrate TMB (3, 3', 5, 5'-Tetramethylbenzidine) is added, the reaction catalyzed by peroxidase yields a blue color that is representative of the antigen concentration. Upon sufficient color development, the reaction can be terminated through addition of Stop Solution (2 N Sulfuric Acid) where the color of the solution will turn yellow. The absorbance of each well can then be read by a spectrophotometer, allowing for generation of a standard curve and subsequent determination of protein concentration.

# ASSAY FORMAT

  
Capture Antibody



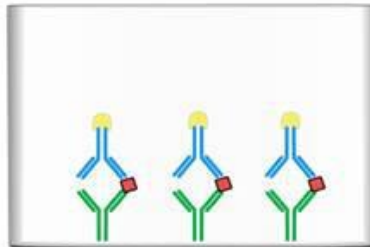
Capture antibodies specific for the target are coated to the plate. Additional binding sites on the plate are blocked.

  
Target Antigen



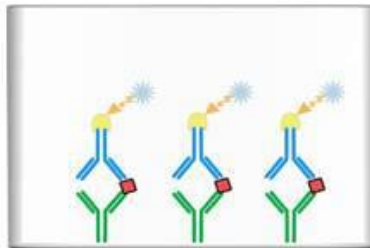
Target antigen present in standard or sample is bound by capture antibodies on the solid-phase.

  
Biotinylated Detection Antibody



Biotinylated detection antibodies specific for the target are added to bind another epitope on the target antigen.

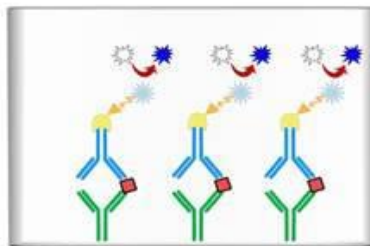
  
Streptavidin-HRP



Streptavidin-HRP attaches to detection antibody via high affinity streptavidin-biotin interaction.

  
Unreacted TMB

  
Blue TMB Diimine Product



TMB substrate is converted to the blue TMB diimine via the HRP enzyme. Upon addition of acid, the reaction terminates and the wells can be read at 450 nm.

## ASSAY RESTRICTIONS

- This ELISA kit is intended for research purposes only, NOT diagnostic or clinical procedures of any kind.
- Materials included in this kit should NOT be used past the expiration date on the kit label.
- Reagents or substrates included in this kit should NOT be mixed or substituted with reagents or substrates from any other kits.
- Variations in pipetting technique, washing technique, operator laboratory technique, kit age, incubation time or temperature may cause differences in binding affinity of the materials provided.
- The assay is designed to eliminate interference and background by other cellular macromolecules or factors present within any biological samples. However, the possibility of background noise cannot be fully excluded until all factors have been tested using the assay kit

## MATERIALS INCLUDED

| Component                              | Quantity Per Plate      | Container |
|--|-------------------------|-----------|
| Microstrips Coated w/ Capture Antibody | 12 x 8-Well Microstrips | -         |
| Protein Standard                       | Lyophilized (83 ng)     | Red       |
| Biotinylated Detection Antibody        | Lyophilized             | Yellow    |
| 400x Streptavidin-HRP                  | 30 $\mu$ l              | Blue      |
| Wash Buffer (15x)                      | 50 ml                   | Clear     |
| Assay Diluent                          | 50 ml                   | Clear     |
| Ready-to-Use Substrate                 | 12 ml                   | Brown     |
| Stop Solution                          | 12 ml                   | Clear     |
| Adhesive Plate Sealers                 | 4 Sheets                | -         |
| Technical Manual                       | 1 Manual                | -         |

## **ADDITIONAL MATERIALS REQUIRED**

The following materials and/or equipment are NOT provided in this kit but are necessary to successfully conduct the experiment:

- Microplate reader able to measure absorbance at 450 nm (with correction wavelength set to 540 nm or 570 nm)
- Micropipettes with capability of measuring volumes ranging from 1  $\mu$ l to 1 ml
- Deionized or sterile water
- Squirt bottle, manifold dispenser, multichannel pipette reservoir or automated microplate washer
- Graph paper or computer software capable of generating or displaying logarithmic functions
- Absorbent paper or vacuum aspirator
- Test tubes or microfuge tubes capable of storing  $\geq 1$  ml
- Bench-top centrifuge (optional)
- Bench-top vortex (optional)
- Orbital shaker (optional)

## **HEALTH AND SAFETY PRECAUTIONS**

- Reagents provided in this kit may be harmful if ingested, inhaled or absorbed through the skin. Please carefully review the MSDS for each reagent before conducting the experiment.
- Stop Solution contains 2 N Sulfuric Acid ( $H_2SO_4$ ) and is an extremely corrosive agent. Please wear proper eye, hand and face protection when handling this material. When the experiment is finished, be sure to rinse the plate with copious amounts of running water to dilute the Stop Solution prior to disposing the plate.

## STORAGE INFORMATION

**Note:** If used frequently, reagents may be stored at 4°C.

**Unopened Kits:** Store at 4°C for 6 months.

| Component                                 | Storage Time                                    | Storage Information |
|---|---|---------------------|
| Microstrips Coated w/<br>Capture Antibody | 6 Months  | 4°C                 |
| 400x Streptavidin-HRP                     |   |                     |
| Wash Buffer (15x)                         |   |                     |
| Assay Diluent                             |   |                     |
| Ready-to-Use Substrate                    |   |                     |
| Stop Solution                             |   |                     |
| Protein Standard                          | Lyophilized: 6 Months<br>Reconstituted: 1 Month | 4°C                 |
| Biotinylated Detection<br>Antibody        |   |                     |
| Adhesive Plate Sealers                    | -   | -                   |
| Technical Manual                          | -   | -                   |



## **SAMPLE PREPARATION AND STORAGE**

If samples are to be used within 24 hours, aliquot and store at 4°C. If samples are to be used over a long period of time, aliquot and store between -20°C and -80°C, depending on the duration of storage.

**Note:** Samples containing a visible precipitate or pellet must be clarified prior to use in the assay.

**Caution:** Avoid repeated freeze/thaw cycles to prevent loss of biological activity of proteins in experimental samples.

### ***Cell Lysate and Supernatants***

Remove large cell components via centrifugation and perform the assay. Cell lysates and supernatants require a dilution using Assay Diluent. A serial dilution may be performed to determine a suitable dilution factor for the sample. For future use of the sample, follow the sample storage guidelines stated above.

### ***Serum***

Allow samples to clot in a serum separator tube (SST) for 30 minutes. After sufficient clotting, centrifuge at 1000 x g for 15 minutes and remove serum from SST in preparation for the assay. A serial dilution may be performed to determine a suitable dilution factor for the sample. For future use of the sample, follow the storage guidelines above.

### ***Plasma***

Use heparin, citrate or EDTA as an anticoagulant to gather plasma from original biological sample. After collection of the plasma, centrifuge for 15 minutes at 1000 x g. This step must be performed within 30 minutes of plasma collection. A serial dilution may be performed to determine a suitable dilution factor for the sample. For future use of the sample, follow the storage guidelines above.

## SAMPLE EXPERIMENT LAYOUT

|          | <b>1</b>                 | <b>2</b>                 | <b>3</b>                 | <b>4</b> | <b>5</b> | <b>6</b> |
|----------|--------------------------|--------------------------|--------------------------|----------|----------|----------|
| <b>A</b> | Standard<br>(High Point) | Standard<br>(High Point) | Standard<br>(High Point) | Sample   | Sample   | Sample   |
| <b>B</b> | Standard<br>(1:2)        | Standard<br>(1:2)        | Standard<br>(1:2)        | Sample   | Sample   | Sample   |
| <b>C</b> | Standard<br>(1:4)        | Standard<br>(1:4)        | Standard<br>(1:4)        | Sample   | Sample   | Sample   |
| <b>D</b> | Standard<br>(1:8)        | Standard<br>(1:8)        | Standard<br>(1:8)        | Sample   | Sample   | Sample   |
| <b>E</b> | Standard<br>(1:16)       | Standard<br>(1:16)       | Standard<br>(1:16)       | Sample   | Sample   | Sample   |
| <b>F</b> | Standard<br>(1:32)       | Standard<br>(1:32)       | Standard<br>(1:32)       | Sample   | Sample   | Sample   |
| <b>G</b> | Standard<br>(1:64)       | Standard<br>(1:64)       | Standard<br>(1:64)       | Sample   | Sample   | Sample   |
| <b>H</b> | Negative<br>Control      | Negative<br>Control      | Negative<br>Control      | Sample   | Sample   | Sample   |

# IMMUNOASSAY PROTOCOL

**Note:** If possible, all incubation steps should be performed on an orbital shaker to equilibrate solutions when added to the microplate wells. Also, all provided solutions should be at ambient temperature prior to use.

**Note:** Avoid adding solutions into wells at an angle, always keep pipette tip perpendicular to plate bottom.

## ***Reconstitution of Provided Materials***

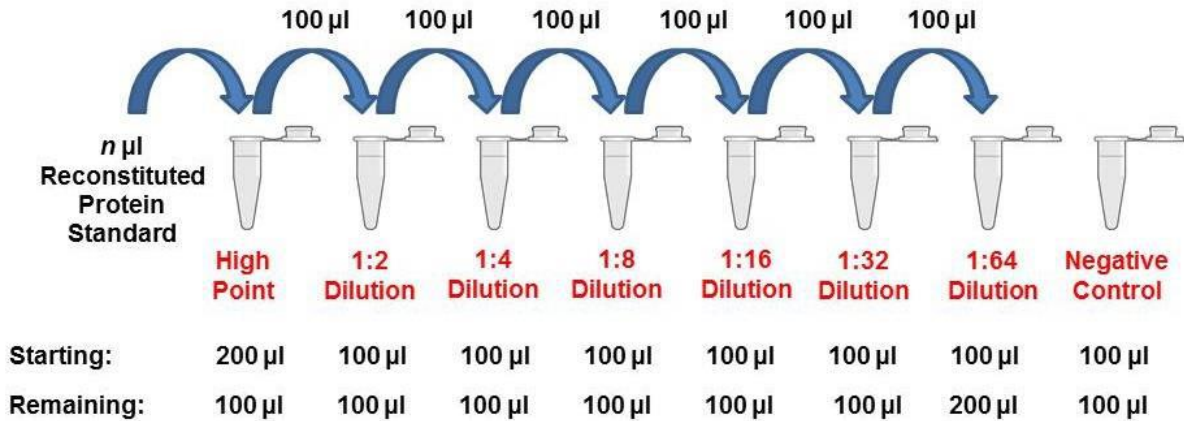
1. Reconstitute the Biotin-Conjugated Detection Antibody in 25  $\mu$ l of ddH<sub>2</sub>O for a concentration of 83  $\mu$ g/ml.
2. Reconstitute the Protein Standard in 83  $\mu$ l of ddH<sub>2</sub>O for a concentration of 1  $\mu$ g/ml.
3. Dilute the 50 ml of 15x Wash Buffer in 700 ml of ddH<sub>2</sub>O for 750 ml of 1x Wash Buffer.

## ***Addition of Known Standard and Unknown Sample to Immunoassay***

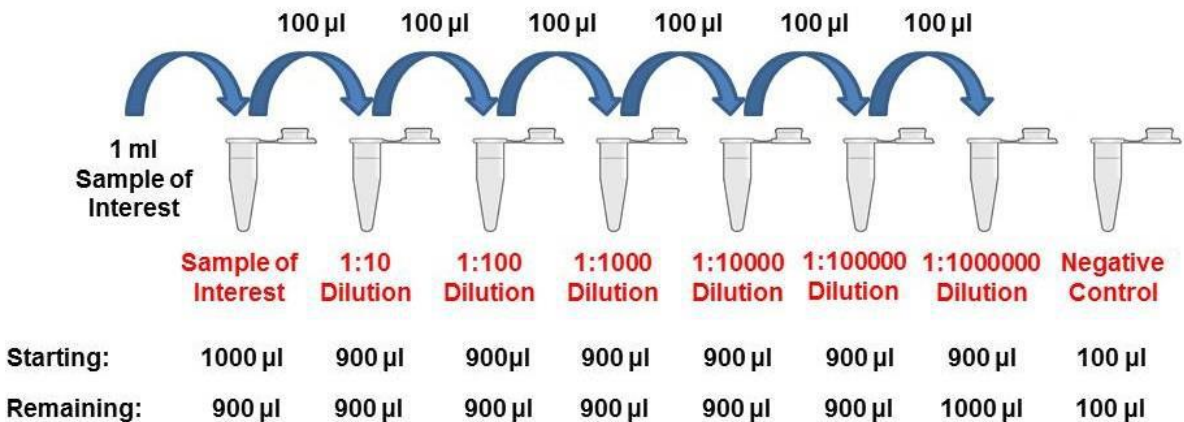
The LSBio™ Rat MIP-1 $\alpha$  ELISA Kit allows for the detection and quantification of endogenous levels of natural and/or recombinant Rat MIP-1 $\alpha$  proteins within the range of 16-1000 pg/ml.

1. Dilute the known standard sample from 1000 pg/ml to 0 pg/ml in a series of microfuge tubes. Mix each tube thoroughly by inverting several times or by vortexing lightly to ensure proper equilibration. Add 100  $\mu$ l of each serial dilution step into the wells of a specified row or column of the 96-well microtiter plate in duplicate or triplicate and incubate at room temperature for 2 hours. Unknown samples of interest can be serially diluted with Assay Diluent to concentrations within the detection range of this assay kit and added to the plate at 100  $\mu$ l per well. Seal the microplate air-tight using one of the microplate adhesive seals provided in this kit or Parafilm if readily available. See Appendix for serial dilution diagram.

To obtain serial dilution high point, dilute reconstituted Protein Standard to the maximum concentration for serial dilution by adding  $n \mu\text{l}$  reconstituted Protein Standard to serial dilution high point tube and then raising the volume to  $200 \mu\text{l}$ . Shown below is a diagram illustrating a hypothetical 2-fold serial dilution on a given reconstituted Protein Standard.



For samples of unknown protein concentrations, serial dilute the experimental sample using Assay Diluent to determine range of detection and acceptable dilutions. Shown below is a diagram illustrating a 10-fold serial dilution on a given Sample of Interest.



### ***Addition of Detection Antibody to Capture Antibody-Bound Samples***

1. Aspirate the protein standard solution out of the microplate wells. If your lab does not have a vacuum-based aspirator, you may dump the solutions from the microplate into a waste container and blot 3-4 times on a stack of paper towels until most or all of the liquid is removed from the wells. Dilute the 15x Wash Buffer to 1x using pure H<sub>2</sub>O. Add 300-400 µl of 1x Wash Buffer to each well being used and gently shake for 5-7 minutes on an orbital shaker. Perform this wash step 4 times consecutively.
2. After the 4<sup>th</sup> wash step, dilute the detection antibody solution 1:400 in Assay Diluent to a concentration of 0.2 µg/ml. Mix the test tube either by inverting several times or vortexing to ensure proper equilibration. Ensure that there is enough detection antibody solution for all wells being used. Add 100 µl of the diluted detection antibody solution into each well, seal the plate and incubate at room temperature for 2 hours.

### ***Conjugation of Streptavidin-HRP to Biotinylated Detection Antibody***

1. Remove the detection antibody solution out of the microplate wells by either vacuum-based aspirator or paper towel blotting. Perform 4 consecutive wash steps with gentle shaking between each wash.
2. Dilute the 400x Streptavidin-HRP by 1:400 using Assay Diluent to a 1x Streptavidin-HRP solution.
3. After the 4<sup>th</sup> wash step, add 100 µl of 1x Streptavidin-HRP solution into each well and incubate at room temperature for 30 minutes.

### ***Application of Liquid Substrate for Colorimetric Reaction***

1. Remove the 1x Streptavidin-HRP solution out of the microplate wells by either vacuum-based aspirator or paper towel blotting. Prepare the Ready-to-Use Substrate by bringing it to room temperature without exposure to fluorescent or UV light as these may degrade the substrate. Perform 4 consecutive wash steps with gentle shaking between each wash.

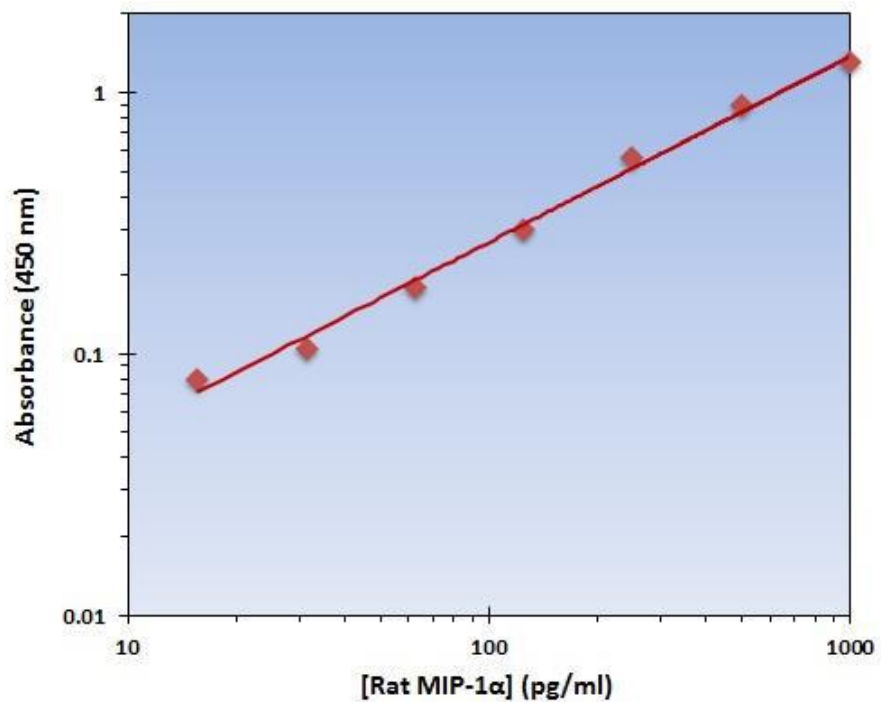
2. After the 4<sup>th</sup> wash step, add 100 µl of Ready-to-Use Substrate solution into each well and incubate at room temperature for color development. The microplate should be kept out of direct light by either covering with an opaque object or putting it into a dark room. Closely monitor the color development as some wells may turn blue very quickly depending on analyte and/or detection antibody-HRP concentrations. Once the blue color has ceased to develop further, immediately add 100 µl of Stop Solution to each well being used. The color in the wells should immediately change from blue to yellow.
3. The microplate is now ready to be read by a microplate reader. Within 30 minutes of adding the Stop Solution, determine the optical density (absorbance) of each well by reading the plate with the microplate reader set to 450 nm. If wavelength correction is available, set to 540 nm or 570 nm. If wavelength correction is not available, subtract readings at 540 nm or 570 nm from the readings at 450 nm. **Caution:** Readings made directly at 450 nm without correction may be higher and less accurate.

### ***Generation of Standard Curve and Interpretation of Data***

1. Average the duplicate or triplicate readings for each standard, control and sample and subtract the average zero standard optical density.
2. Generate a standard curve by using Microsoft Excel or other computer software capable of establishing a 4-Parameter Logistic (4-PL) curve fit. If using Excel or an alternative graphing tool, plot the average optical density values in absorbance units (y-axis) against the known standard concentrations in pg/ml (x-axis). **Note:** Only use the values in which a noticeable gradient can be established. Afterwards, generate a best fit curve or “trend-line” through the plotted points via regression analysis. **Note:** Shown on the next page is an example of typical data produced by analysis of the standard sample.

The data and subsequent graph was obtained after performing a cytokine ELISA for Rat MIP-1 $\alpha$ . Each known sample concentration was assayed in triplicate.

| <b>Rat MIP-1<math>\alpha</math><br/>Standard Curve</b> |                             |
|--|-----------------------------|
| <b>Concentration<br/>(pg/ml)</b>                       | <b>Average OD<br/>450nm</b> |
| 1000   | 1.3                         |
| 500  | 0.9                         |
| 250  | 0.56                        |
| 125  | 0.3                         |
| 62.5   | 0.18                        |
| 31.25  | 0.105                       |
| 15.625   | 0.08                        |



## SUMMARIZED PROTOCOL

Reconstitute Biotinylated Detection Antibody and Protein Standard and dilute the 15x Wash Buffer as specified.



Perform serial dilution of Protein Standard and prepare samples as desired. See sample preparation section for instructions to dilute serum and plasma samples.



Add 100  $\mu$ l of Protein Standard, sample or control to each well and incubate for 2 hours at room temperature.



Aspirate Protein Standards, samples or controls out and wash plate 4 times.



Dilute Biotinylated Detection Antibody as specified. Add 100  $\mu$ l to each well and incubate for 2 hours at room temperature.



Aspirate Biotinylated Detection Antibody out and wash plate 4 times.



Dilute 400x Streptavidin-HRP as specified. Add 100  $\mu$ l of 1x Streptavidin-HRP to each well and incubate at room temperature for 30 minutes.



Aspirate 1x Streptavidin-HRP out and wash plate 4 times.



Add 100  $\mu$ l of Ready-to-Use Substrate to each well and incubate at room temperature for color development.



Add 100  $\mu$ l of Stop Solution and read plate at 450 nm.



## **SENSITIVITY**

The Rat MIP-1 $\alpha$  ELISA Kit allows for the detection and quantification of endogenous levels of natural and/or recombinant Rat MIP-1 $\alpha$  proteins within the range of 16-1000 pg/ml.

## **CROSS REACTIVITY AND SPECIFICITY**

The Rat MIP-1 $\alpha$  ELISA is capable of recognizing both recombinant and naturally produced Rat MIP-1 $\alpha$  proteins. The antigens listed below were tested at 50 ng/ml and exhibited less than 1% cross reactivity.

- Murine: MIP-1 $\alpha$

The antigens listed below were tested at 50 ng/ml and did not exhibit significant cross reactivity or interference.

- Human: MIP-1 $\alpha$ , MIP-1 $\beta$ , IP-10, LAG-1, LD-78
- Murine: MIP-1 $\beta$ , MIP-1 $\gamma$
- Rat: MIP-1 $\beta$ , MCP-1, RANTES

**Important Note:** During shipment, small volumes of product will occasionally become entrapped in the seal of the product vial. We recommend briefly centrifuging the vial to dislodge any liquid in the container's cap prior to opening.

**Warning:** This reagent may contain sodium azide and sulfuric acid. The chemical, physical, and toxicological properties of these materials have not been thoroughly investigated. Standard Laboratory Practices should be followed. Avoid skin and eye contact, inhalation, and ingestion. Sodium azide forms hydrazoic acid under acidic conditions and may react with lead or copper plumbing to form highly explosive metal azides. On disposal, flush with large volumes of water to prevent accumulation.

**Returns, Refunds, Cancellations:** Any problems with LifeSpan products must be reported to LifeSpan within 10 days of product receipt. The customer must obtain written authorization from LifeSpan before returning items. To request that goods be returned, please contact LifeSpan Technical Support. If an error by LifeSpan BioSciences results in shipment of an incorrect order, LifeSpan will, at its option, either ship a replacement order at no charge, or credit the customer's account for the original product shipped in error. Returns and cancellations may be subject to a 30% restocking fee.

**Conditions & Warranty:** All LifeSpan products are intended for Research Use Only and are not for use in human therapeutic or diagnostic applications. The information supplied with each product is believed to be accurate, but no warranty or guarantee is offered for the products, because the ultimate conditions of use are beyond LifeSpan's control. The information supplied with each product is not to be construed as a recommendation to use this product in violation of any patent, and LifeSpan will not be held responsible for any infringement or other violation that may occur with the use of its products. Under no event will LifeSpan be responsible for any loss of profit or indirect consequential damage, including, but not limited to, personal injuries resulting from use of these products. LifeSpan's liability to any user of Products for damages that do not result from any fault of the user, will be limited to replacement of the Product(s) only, and in no event shall LifeSpan's liability exceed the actual price received by LifeSpan for the Product(s) at issue. LifeSpan shall not be liable for any indirect, special, incidental or consequential damages. LIFESPAN FURTHER DISCLAIMS ANY AND ALL EXPRESS AND IMPLIED OR STATUTORY WARRANTIES WITH RESPECT TO THE PRODUCTS, INCLUDING BUT NOT LIMITED TO ANY IMPLIED WARRANTIES OF MERCHANTABILITY, FITNESS FOR A PARTICULAR PURPOSE. LifeSpan disclaims any and all responsibility for any injury or damage which may be caused by the fault of the user.

**For research use only. Not approved for use in humans or for clinical diagnosis.**



2401 Fourth Avenue Suite 900 Seattle, WA 98121

Tel: 206.374.1102

Fax: 206.577.4565

[Technical.Support@LSBio.com](mailto:Technical.Support@LSBio.com)